

# Looks Great Drives Easy Safe for All Built for Fun



## ◦ Fourfold Charm, Favorite Choice ◦

**Looks Great** Fluid curved design, cute eye-like headlights, complementary colors

**Drives Easy** Electronic uphill assistance, rear parking radar on all versions

**Built for Fun** Construction toy play, customizable slots, driving mode switching

**Safe for All** High-strength body, eco-friendly cabin, triple-electric safety

Model name	Bestune Xiaoma 120km medium configuration	Bestune Xiaoma 170km medium configuration	Bestune Xiaoma 170km high configuration
<b>Basic parameters</b>			
Maximum power (kW)	20	20	20
Maximum torque (N · m)	85	85	85
Maximum speed (km/h)	100.0	100.0	100.0
<b>Body</b>			
Length [mm]	3000	3000	3000
Width [mm]	1510	1510	1510
Height [mm]	1630	1630	1630
Wheelbase [mm]	1953	1953	1953
Minimum ground clearance under full load (mm)	130	130	130
Approach angle (°)	29	29	29
Departure angle (°)	43	43	43
Body structure	Hatchback	Hatchback	Hatchback
Number of car doors	3	3	3
Number of Seats	4	4	4
<b>Motor</b>			
Motor type	Permanent magnet synchronous motor	Permanent magnet synchronous motor	Permanent magnet synchronous motor
Motor layout	Rear motor layout	Rear motor layout	Rear motor layout
Battery type	Lithium iron phosphate	Lithium iron phosphate	Lithium iron phosphate
Battery energy (kWh)	19.3/9.98	13.9	13.9
Chassis steering	1630	1630	1630
Driving method	RR(Rear-engine,Rear-wheel drive layout)	RR	RR
Front suspension type	MacPherson independent suspension	MacPherson independent suspension	MacPherson independent suspension
Rear suspension type	3-link non-independent suspension	3-link non-independent suspension	3-link non-independent suspension
Type of assistance	Electric power steering	Electric power steering	Electric power steering
<b>Wheel braking</b>			
Front brake type	disc	disc	disc
Rear brake type	drum	drum	drum
Parking brake type	Handbrake	Handbrake	Handbrake
Tire specifications	145/70 RT2	145/70 RT2	145/70 RT2
<b>Active/passive safety equipment</b>			
Driver/front passenger seat airbags	Main ● /Front passenger-	Main ● /Front passenger-	Main ● /Front passenger-
Tire pressure monitoring	Tire pressure alarm	Tire pressure alarm	Tire pressure alarm
Safety belt reminder	Driver's seat	Driver's seat	Driver's seat
ABS anti-lock braking system	●	●	●
Brake force distribution (EBD/CBC, etc.)	●	●	●
<b>Auxiliary/control configuration</b>			
Front/rear parking radar	Front-/Rear ●	Front-/Rear ●	Front-/Rear ●
Driving assistance imaging	-	-	Reverse image
Driving mode switching	Sports/economy	Sports/economy	Sports/economy
Uphill assistance	●	●	●
<b>External/anti-theft configuration</b>			
Wheel material	steel	steel	steel
Key type	Mechanical/Remote Control	Mechanical/Remote Control	Mechanical/Remote Control
Battery pre-heating	●	●	●
<b>Internal configuration</b>			
Steering wheel material	Plastic	Plastic	Plastic
Shift mode	Electronic Shift	Electronic Shift	Electronic Shift
Screen - combination instrument 【LDD】 (7 inches)	-	●	●
Screen - combination instrument 【break code screen】 (7 inches)	●	-	-
<b>Seat configuration</b>			
Seat material	Textile	Textile	Textile
Driver's seat adjustment mode	Forward and backward-backrest	Forward and backward-backrest	Forward and backward-backrest
Front passenger seat adjustment mode	Forward and backward-backrest	Forward and backward-backrest	Forward and backward-backrest
Rear seat reclining mode	5/5 down	5/5 down	5/5 down
<b>Multimedia configuration</b>			
Mobile Bluetooth	●	●	●
Driving mode switching	Sports/economy	Sports/economy	Sports/economy
Uphill assistance	●	●	●
Bluetooth Speaker	○	○	○
Multimedia/charging interface	USB	USB	USB
Number of USB/type-C interfaces	1 USB interface at front row	1 USB interface at front row	1 USB interface at front row
Number of speakers	1	1	2
Remote function of mobile app	Remote unlocking	Remote unlocking	Remote unlocking
12V power supply	●	●	●
Radio	●	●	●
<b>Lighting configuration</b>			
Low/high beam light source	halogen	halogen	halogen
LED daytime running lights	●	●	●
Front position lamp, front turn signal	LED	LED	LED
Rear turn signal, rear fog lamp, reversing lamp	halogen	halogen	halogen
Rear position light/brake light	LED	LED	LED
Rear fog lamp - left side	●	●	●
Reverse lamp - right	●	●	●
Front headlights - manual height adjustment	●	●	●
Reading lights - front	●	●	●
<b>Glass/rearview mirror</b>			
Front/rear power windows	Front ● Rear-	Front ● Rear-	Front ● Rear-
Exterior rearview mirror function	Manual adjustment	Manual adjustment	Manual adjustment
Interior rearview mirror function			With dash cam interface
Interior vanity mirror	Driver's seat	Driver's seat	Driver's seat
<b>Air conditioning/refrigerator</b>			
Air conditioning temperature control method	Manual	Manual	Manual

Note: ● Standard configuration ○ Optional - NA





**SMART VEHICLE SHARING IN THE FUTURE  
NEXT AUTOMATIC TAXI**

**INTIMATE TRAVEL PARTNER**



**一汽奔腾NAT**

**INTIMATE TRAVEL PARTNER**



# NAT

## Smart vehicle sharing in the future Next Automatic Taxi

In the new era, the process of electrification, intelligence, networking and sharing of automobiles is accelerating

Bringing huge development potential to the travel industry

FAW Bestune takes building national taxis as its long-term goal

Cooperates with the head travel platform, goes deep into travel scenarios,

And is developing epoch-making "customized green electric national taxis"  
-NAT model

So as to ensure the beauty of the city, the efficiency of operation, dignity of the driver, and the experience of the passengers



# Catalogue

Custom concept	P05-10
New shape	P11-16
Comprehensive security	P17-22
Efficient operation	P23-32
Driver-oriented	P33-44
Honorary award	P45-46
Parameter configuration	P47-54



# Custom concept

Scenario-defined products

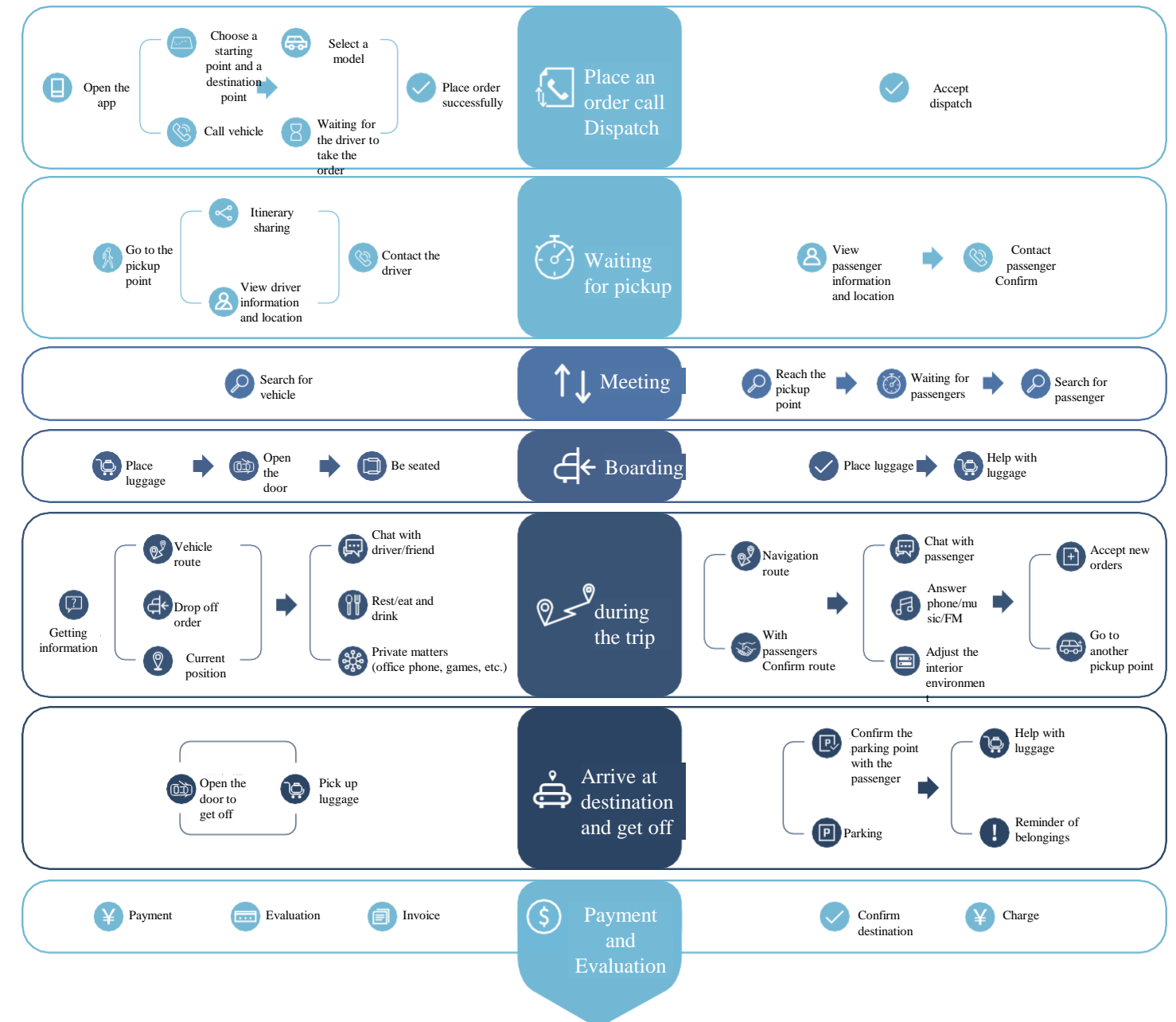
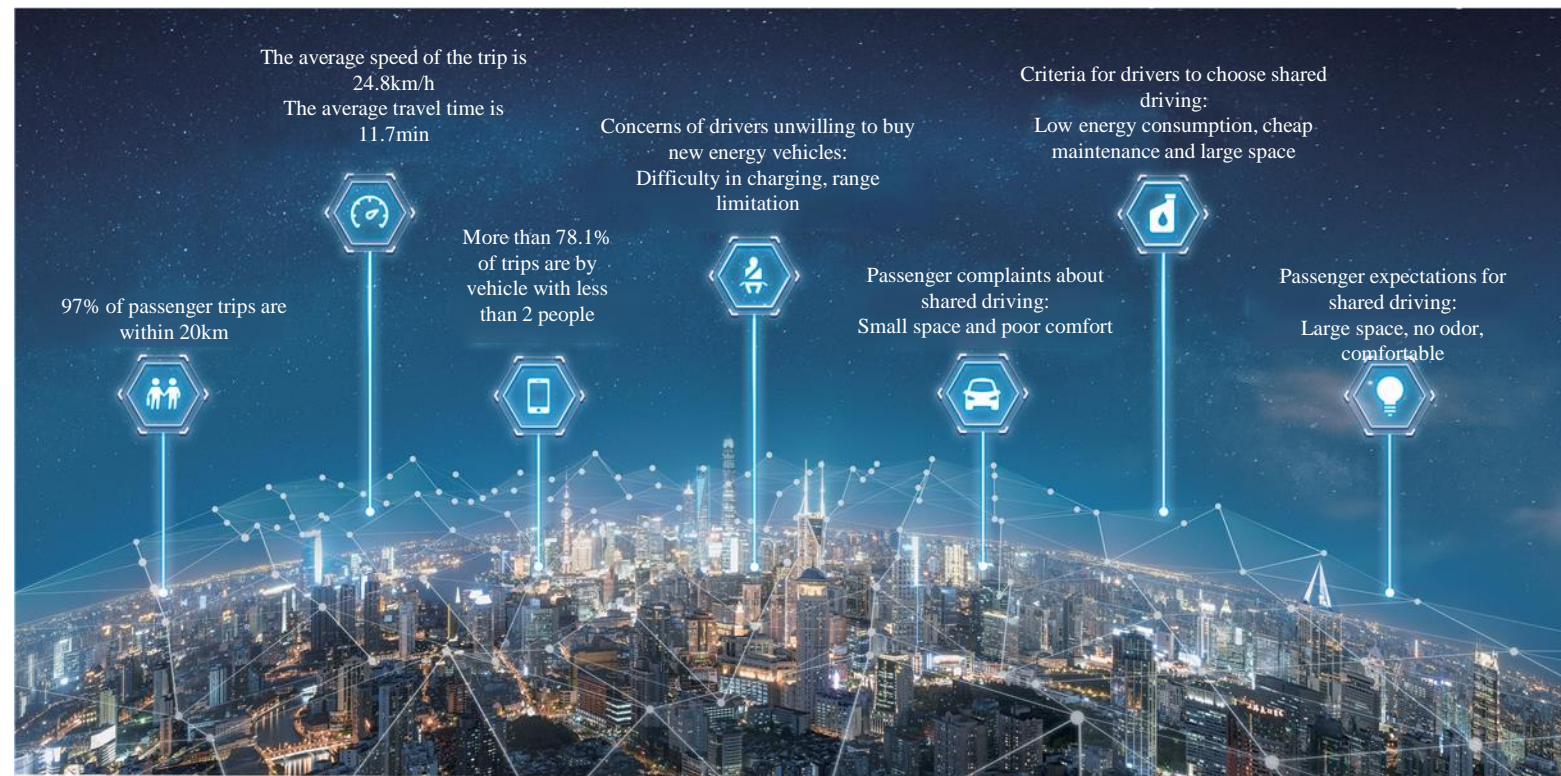
Born for shared travel



Next Automatic Taxi

# Scenario-defined products

- Development based on operational big data
- Combined with the whole process contact of shared travel orders





## Born for shared travel

### ■ Full life cycle operational assessment

—A shared travel vehicle with a perfect balance of recognition, safety, efficiency and experience







# New shape

Small body, big space

Dynamic and avant-garde shape

Exclusive identification design

Help passengers find vehicles quickly

## Next Automatic Taxi

## Small body, Big space

Free shuttle in urban crowded road conditions,  
luxury enjoyment of superlative interior space

- 4450mm vehicle length, A-class vehicle dimensions
- 2850mm wheelbase, B-class wheelbase size





## Dynamic and avant-garde shape

### Balancing pragmatism with electric aesthetics

- Digital raindrop mask
- Folding rear windshield
- Pioneer body streamline



## Exclusive identification design

In the traffic, you can find it at a glance

- Window-of-world headlights
- Running-water running lights
- Tunnel-sense taillights



# Comprehensive security



Vehicle safety

Extending to operational safety

Comprehensive protection of driver and passenger safety

## Next Automatic Taxi

## Active safety

Easily cope with complex road conditions in operational scenarios

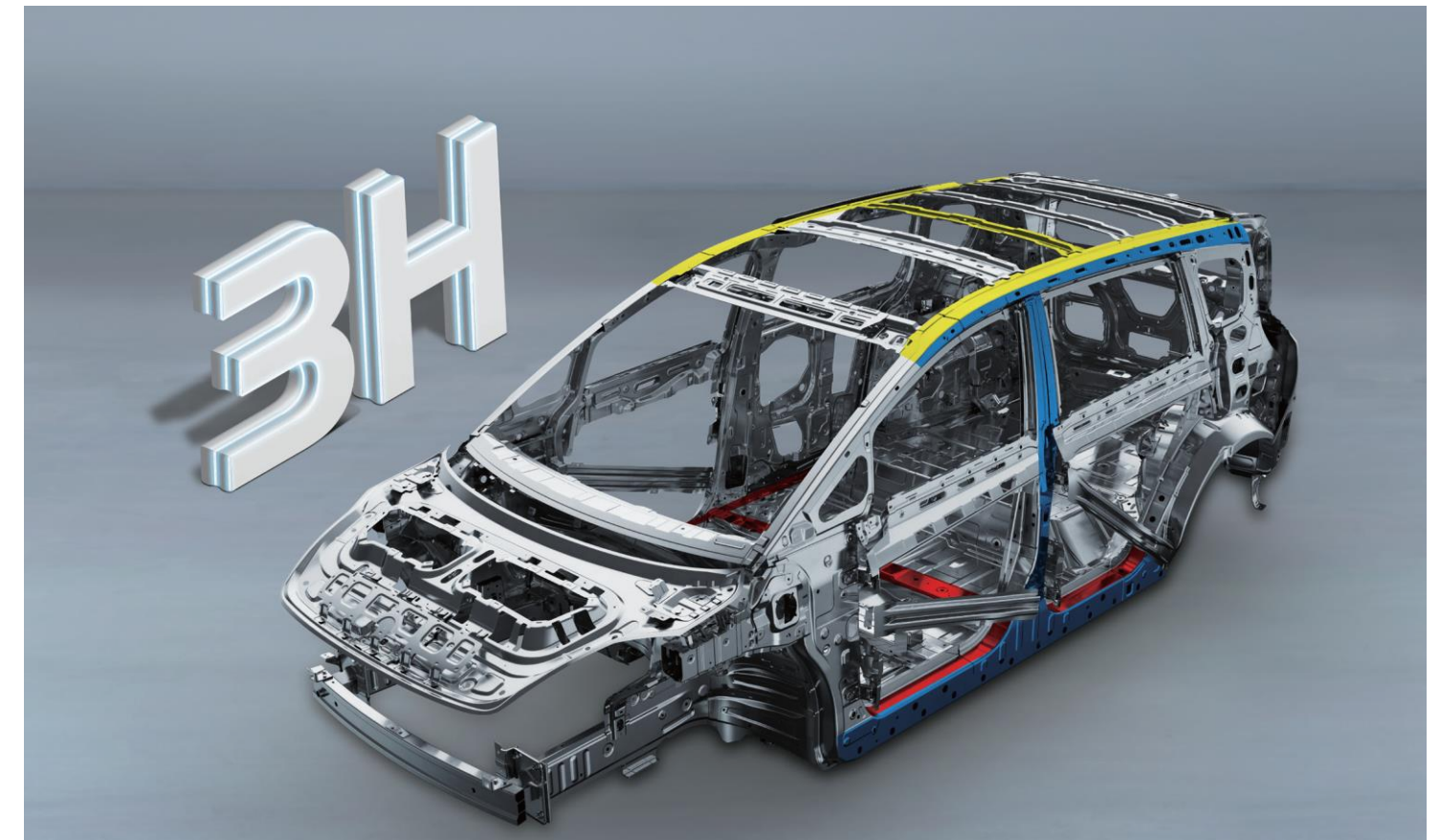
- Equipped with Bosch 9.3ESP system
  - Steady adjustment of driving status
- FCW Forward Collision Warning
  - Provides three-level warning policies:
    - Pre-collision warning, collision warning, warning braking
- AEB automatic emergency braking
  - For "forward collision risk"
  - Active intervention braking
  - Avoid collisions or mitigate the extent of collisions



## Passive safety

Safe and strong shield for the driver and passenger

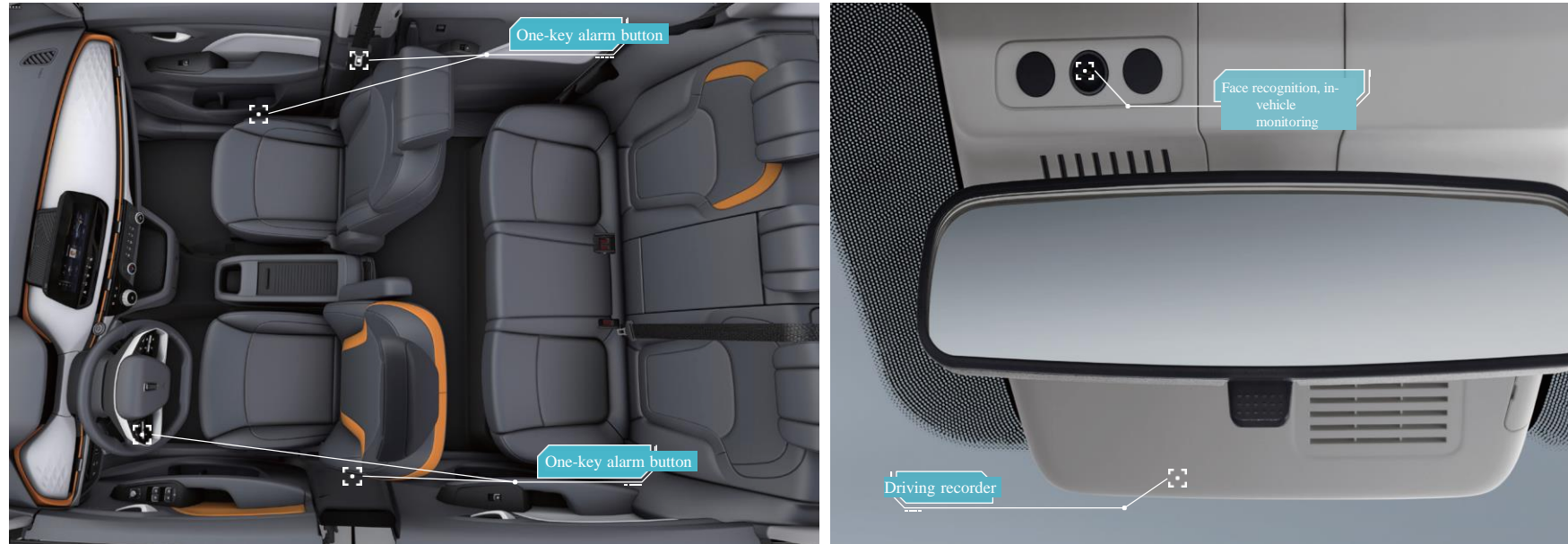
- 3H high-strength body structure, to effectively distribute impact energy
- The whole vehicle uses a large amount of high-strength steel, which can withstand greater pressure



# Smart security

## Real-time online guarantee of travel safety

- Driver face recognition, vehicle and person consistent authentication
- In-vehicle real-time network monitoring
- The driving recorder monitors the driving status of the vehicle at all times
- 4 one-key alarm buttons in the whole vehicle to quickly respond to emergency situations



# Health and safety

## Protect the healthy environment in the vehicle

- One-touch ventilation
- PM2.5 filter element



# Efficient operation

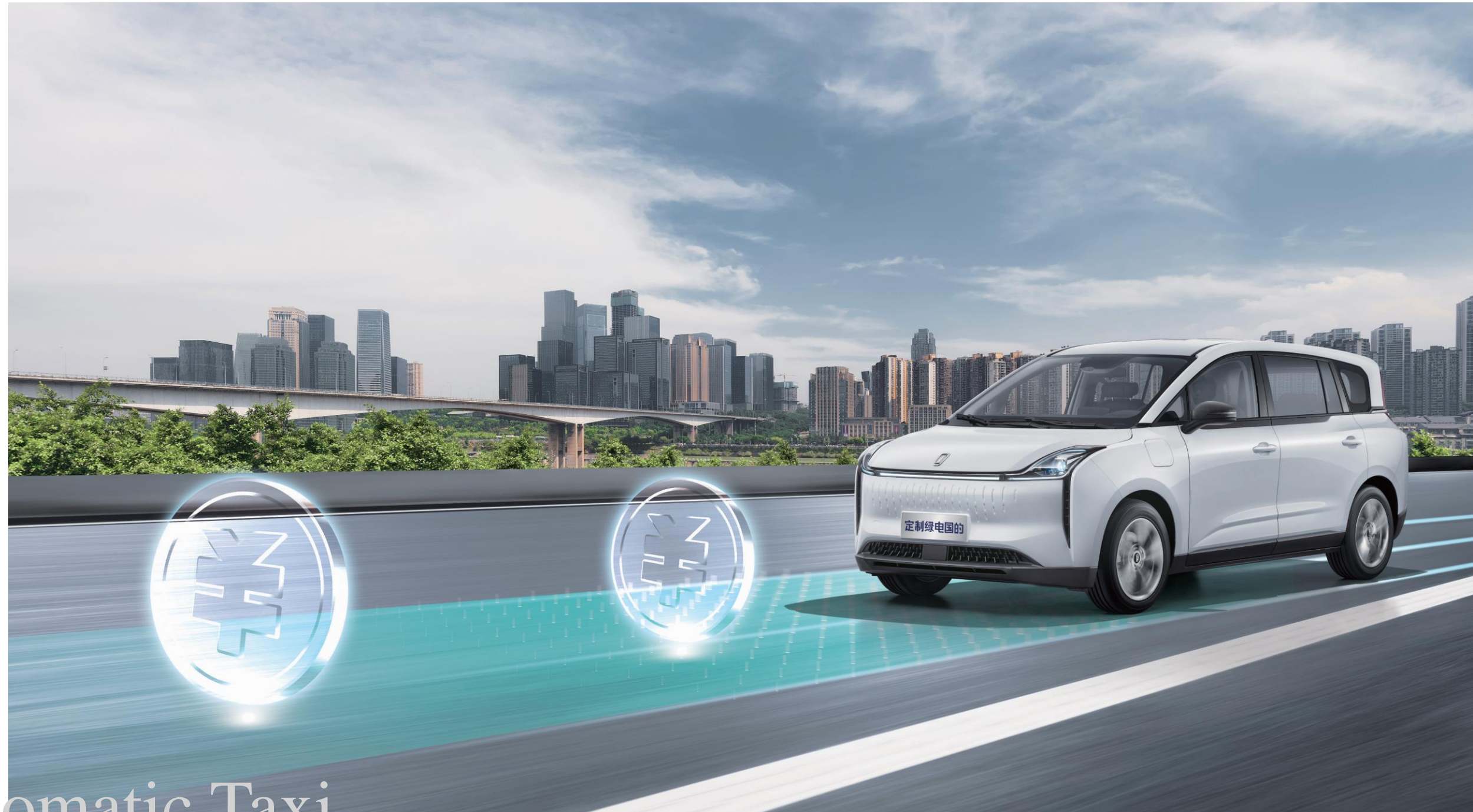
High efficiency and low  
consumption

Strengthened building

Cost-effective maintenance

Help drivers spend less and earn  
more

## Next Automatic Taxi



# Reliable platform and motor, power battery and electric control system

## Naturally pure electricity, trustworthy

- FAW FME pure electric platform architecture

Platformization brings lower R&D and maintenance costs

Thereby reducing the user's purchase and use costs

- Endorsement of top suppliers of motor, power battery and electric control system

Battery: CATL, BYD

Electric drive: CRRC, Huawei

Electronic control: UAES

## Adaptive energy performance

### Meet operational needs, reasonable and not redundant

- The range can reach 425km

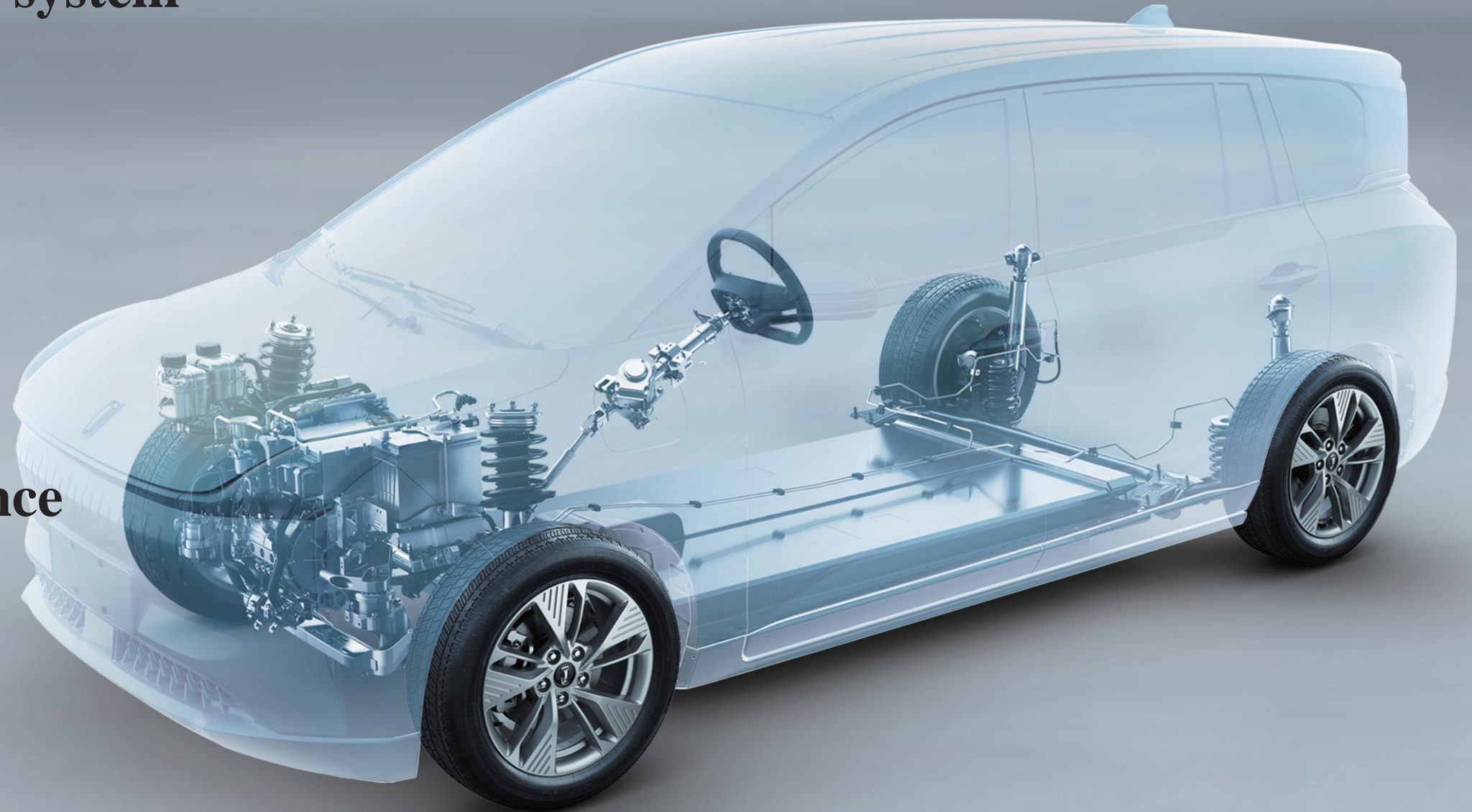
Exceeding the average daily operating range

- Motor power up to 120kw

Peak torque up to 260N m

Leading fuel models in the same class

Satisfying the driver's driving pleasure





# Abundant replenishment programs

## Free combination of charge and replacement

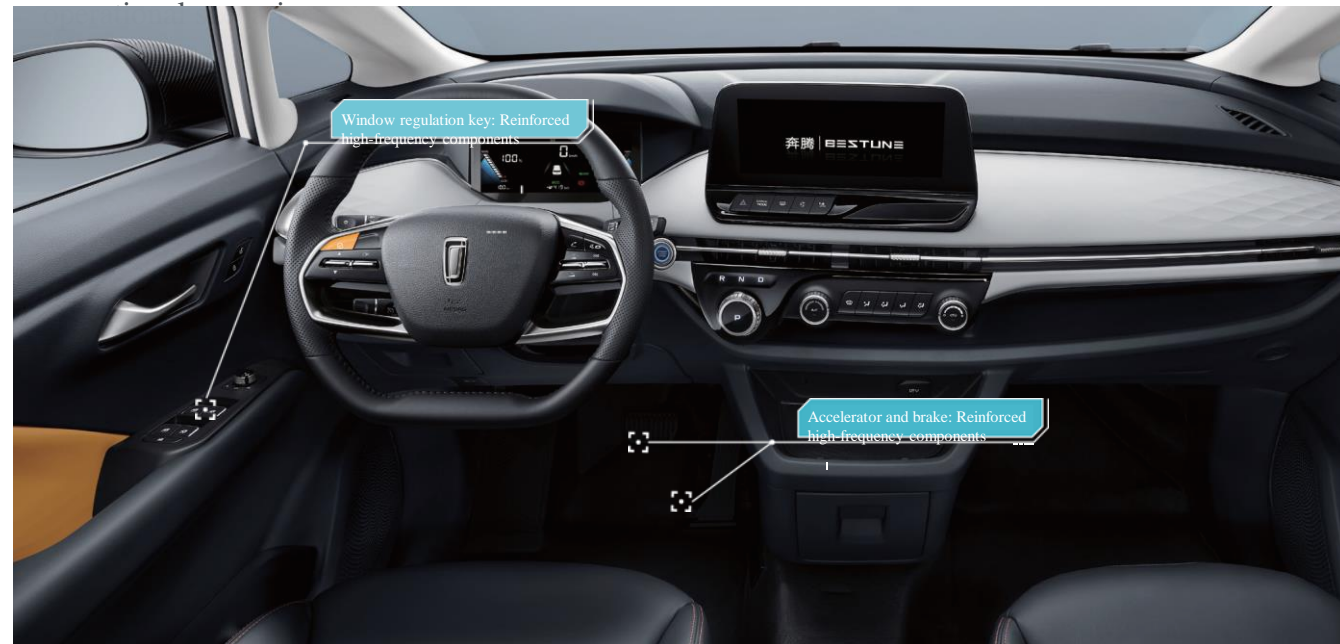
- 0.5h fast charge
- 8h slow charge
- Quick change



# Strengthened building

Reliable and durable, operate with guarantee

- Durability test result and range far exceed the industry average
- Maximized design validation at high frequency usage locations in



**Cost-effective**

### Service Privilege Package

- Extended Warranty Package
- Maintenance Privilege Package
- Consumables Replacement Privilege Package



## Super long warranty period(Operation)

At the leading level of the industry

- Vehicle warranty for three years or 300,000 kilometers
- Motor, power battery and electric control system warranty for eight years or 600,000 kilometers

### Service Privilege Package

Great discounts

<b>Extended Warranty Package</b>	Extended vehicle warranty
<b>Maintenance Privilege Package</b>	Vehicle condition check, differential oil, coolant, brake fluid, air conditioner filter, etc.
<b>Consumables Replacement Privilege Package</b>	Tires, brake pads, batteries, wiper blades, etc. <small>at an additional cost</small>

# Driver-oriented

- Driver and passenger double C-position design
- Standardized professional experience for drivers
- Passenger luxury ride experience



Next Automatic Taxi



## Driver health seat

### Effectively relieve long-term driving fatigue

- The material is made of PU + soft foam layer, with delicate and soft touch and excellent wrapping
- The hardness is increased by 25% compared with other positions, providing better support
- Equipped with four-direction electric lumbar support, seat ventilation, to relax waist, back, buttocks and other parts
- The seat supports a maximum 177° down, and the rest mode can be turned on at any time



## Large driving space

### Humanized optimization strategy to upgrade space experience

- The front driver and passenger seats take an innovative 55: 45 space allocation
- The driver's transverse space is 500mm, and the longitudinal space is 1020mm
- The width of the driver's seat cushion is 490mm, the length is 480mm, with the back and legs well supported



## Light&convenient driving

### Simplify driver operation

- One-click start button for easy activation
- Electronic knob for quick shifting
- Electric power steering wheel for comfortable control

## Intelligent assistance

### Providing intimate companionship throughout the trip

- 8-inch digital instrument panel, showing key vehicle information
- 10-inch central control large screen, which can replace mobile phone navigation, with clear reversing image display
- Support OTA upgrade, online iteration, frequently updated



## Respect for the sliding door

- Help passengers to solve the difficulties such as inconvenient opening the door with both hands and narrow space
- Large openings, low thresholds, handrails for getting in and out of the vehicle, passengers can "get in conveniently"
- Avoid safety threats to vehicles or pedestrians behind when opening the door

# Multimodal space

Flexible to meet the needs of common riding scenarios

- Operating mode
- Entertainment mode
- Casual mode

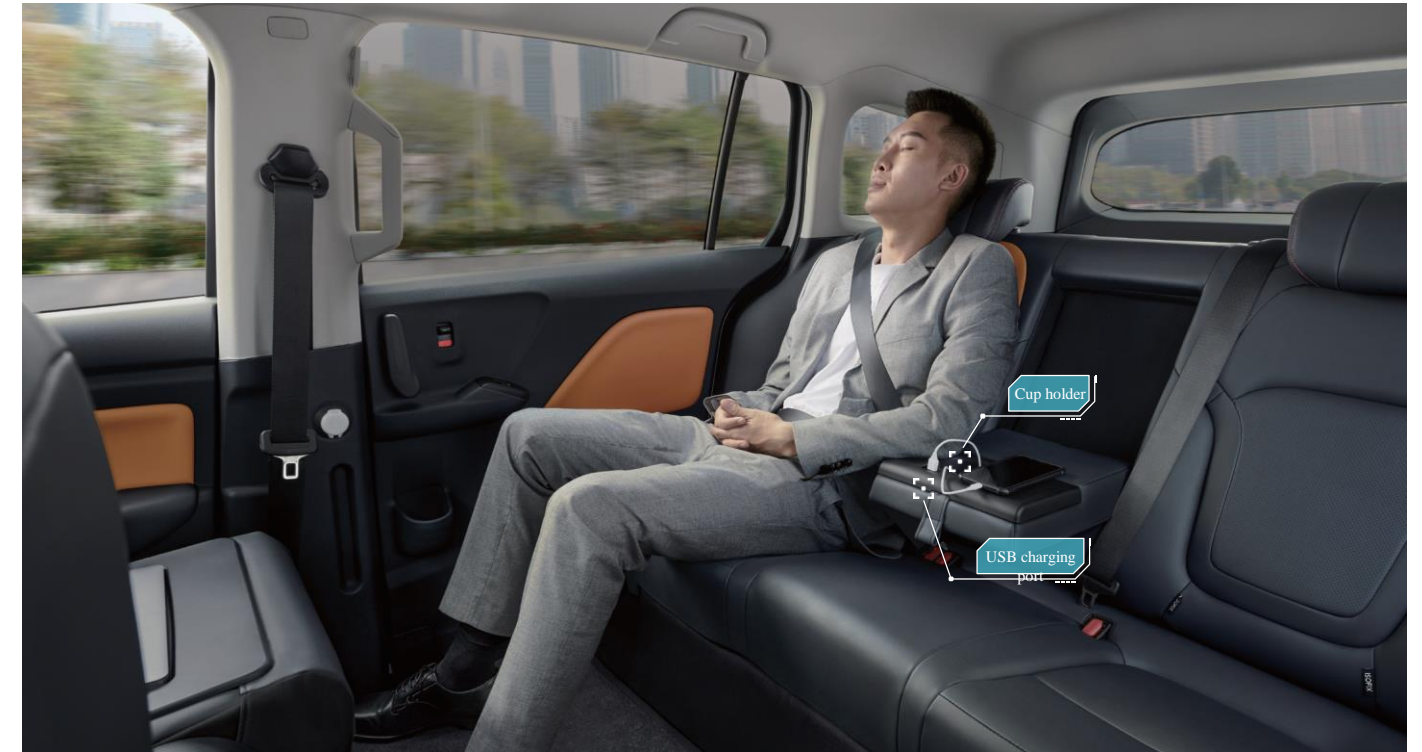




## Superlative rear space

### Large and comfortable first-class cabin

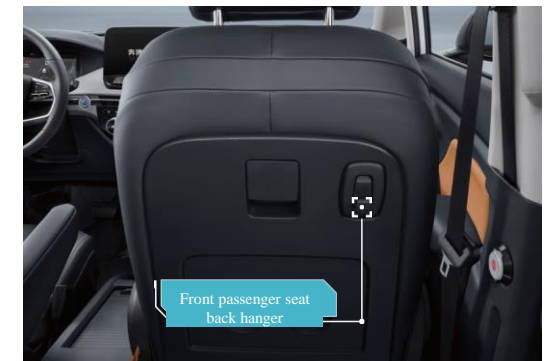
- Rear legroom is 1007mm, comparable to medium and large vehicles
- The front passenger seat can be folded down and slide forward, enjoying the BOSS level riding experience



## Intimate functional design

### Warm details of travel in the new era

- The rear center armrest is equipped with a USB charging port and a cup holder
- Front passenger seat back equipped with storage hooks



# Honorary award

April 10, 2021  
Public launch

**Most Popular Travel Vehicle Award**

2021 The 5th National Travel Industry Development Summit



2021 The 3rd China Mobility Industry Development Forum

**Best online ride-hailing model award**

2021 National Travel Industry Annual Meeting and Industry Classic Vehicle Appreciation Meeting

**Annual Recommended Travel Model Award**

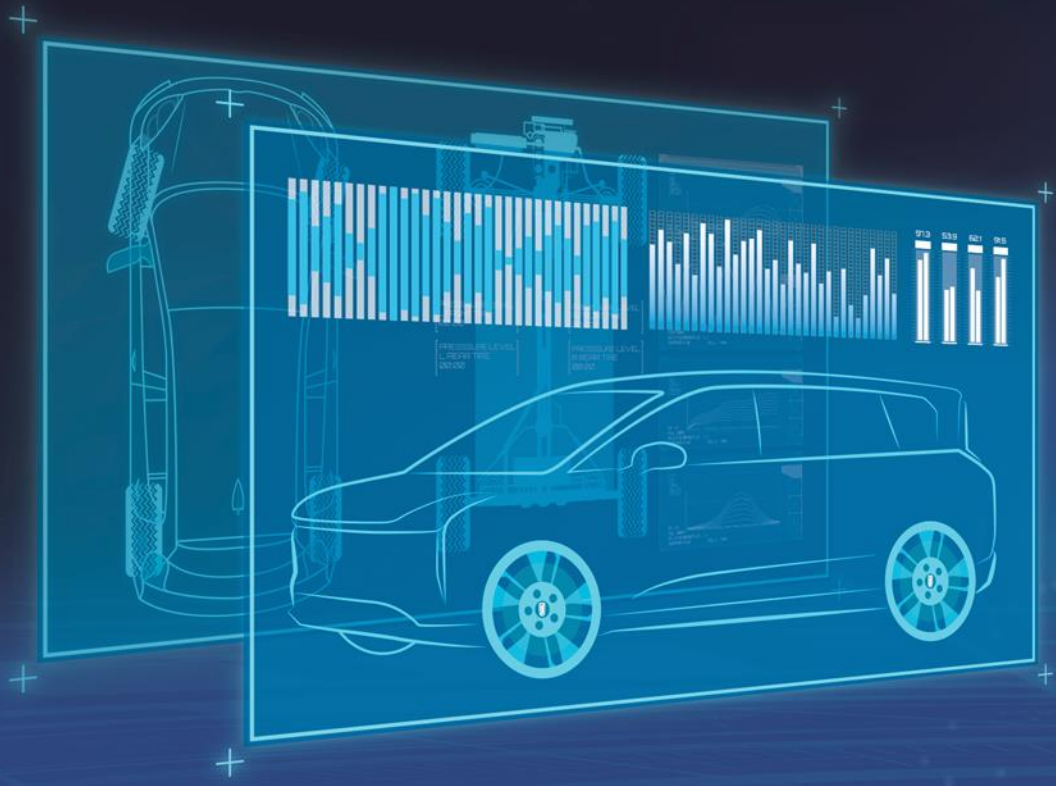


2022 "Changbai Cup" Fourth New Energy Vehicle Low Temperature Performance Evaluation and Rally

**Electric Passenger Vehicle Group "Annual Best Low Temperature Resistance Award"**

## Next Automatic Taxi

Smart vehicle sharing in the  
future  
Next Automatic Taxi  
CAR

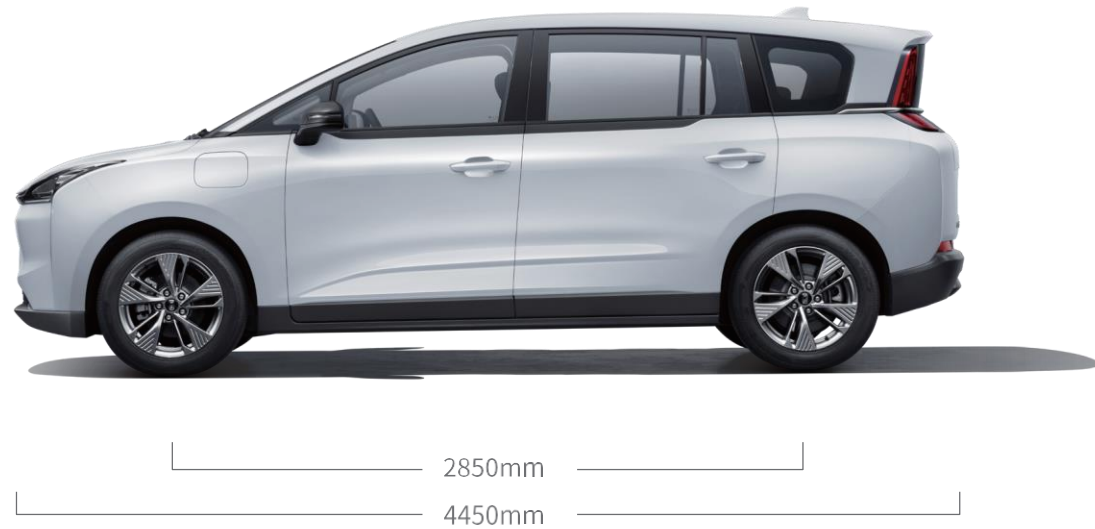


# Parameter configuration

Combining online ordering and cruising  
Full scenario customization

## Next Automatic Taxi

# Size



# Interior



Vehicle model	Enjoy	Comfort	Delight	Smart
<b>Vehicle parameters</b>				
L×W×H (mm)	4450×1840×1680			
Wheelbase (mm)	2850			
Curb weight (kg)	1650/1700			
Vehicle warranty	Three years or 300,000 kilometers			
<b>Chassis steering</b>				
Drive type	Front-engine, front-wheel-drive layout			
Front suspension system	McPherson independent suspension			
Rear suspension system	Torsion beam semi-independent suspension			
Steering type	Electric power steering			
<b>Wheel braking</b>				
Braking system	Front: Disc; Rear: disc			
Tire specifications	215/55 R17			
Tire pressure display (indirect)	■	■	■	■
<b>Safety equipment</b>				
Driver/front passenger seat airbags	Driver_/front passenger ■	Driver_/front passenger ■	Driver/front passenger■	Driver■/front passenger■
Driver/front passenger seat belt reminder	Driver■/front passenger-	Driver_/front passenger ■	Driver/front passenger■	Driver■/front passenger■
Anti-lock Braking System (ABS)	■	■	■	■
Electronic Brake Force Distribution (EBD/EBV)	■	■	■	■
Brake Assist (BA)	■	■	■	■
Traction Control System (TCS)	■	■	■	■
Electronic Stability Control (ESP)	■	■	■	■
Forward Collision Warning (FCW)	-	-	-	■
Automatic Emergency Braking (AEB)	-	-	-	■
<b>Assist/Control configuration</b>				
Electronic shift	■	■	■	■
Rear parking radar	-	■	■	■
Reverse image	-	■	■	■
Cruise control system	■	■	■	■
Working mode (Normal, Eco, Eco+)	■	■	■	■

Vehicle model	Enjoy	Comfort	Delight	Smart
AUTO HOLD	■	■	■	■
Brake energy recovery	■	■	■	■
<b>External / Anti-Theft Configuration</b>				
Right rear sliding door	Manual	Manual	Electric	Electric
Engine anti-theft	■	■	■	■
Body anti-theft	■	■	■	■
Anti-theft tracking system (global positioning)	■	■	■	■
<b>Internal configuration</b>				
Steering wheel material	PU (plastic)	Microfiber leather	Microfiber leather	Microfiber leather
Multifunction steering wheel	■	■	■	■
Driving recorder	-	-	-	■
Broken code instrument panel	■	■	■	■
<b>Seat configuration</b>				
Seat material	Fabric	Leather	Leather	Leather
Main driver's seat with manual 6-direction adjustment	■	■	■	■
Main driver's seat function	Rest mode	4-direction lumbar support Seat ventilation Rest mode	4-direction lumbar support Seat ventilation Rest mode	4-direction lumbar support Seat ventilation Rest mode
4-direction manual adjustment of passenger seat	■	■	■	■
Passenger seat function	Fold and slide	Fold and slide	Fold and slide	Fold and slide
Front and rear center armrests	Front (driver's seat only) ■/rear-	Front (driver's seat only) ■/Rear ■	Front (driver's seat only) ■/rear■	Front (driver's seat only) ■/rear■
Rear seats down	■	■	■	■
<b>Multimedia configuration</b>				
10-inch LCD central control display screen	-	■	■	■
Bluetooth	-	■	■	■
In-vehicle WiFi	-	■	■	■
<b>Stereo radio</b>				
Number of USB interfaces	Front 1	Front 2 / rear 2	Front 2 / rear 2	Front 2 / rear 2
12V power interface	■	■	■	■
OTA level	—	■	■	■

Notes: "■" for standard configuration; "□" for optional configuration; "-" for no such configuration; Pictures, texts, and technical parameters are only for reference and do not constitute part of the contract. Please consult Bestune NAT local dealers for details.

## Bestune NAT Power Introduction

Vehicle model	Enjoy	Comfort	Delight	Smart
<b>Lighting configuration</b>				
LED headlights	■	■	■	■
LED daytime running lights	-	-	■	■
LED tail lights	■	■	■	■
Headlight height adjustable	■	■	■	■
Headlights delay off	■	■	■	■
<b>Glass/Rearview mirror</b>				
Power windows	■	■	■	■
Window one-button regulation and anti-pinch function	■	■	■	■
Electric adjustment of exterior rearview mirrors	■	■	■	■
Exterior rearview mirrors heating	-	■	■	■
Manual anti-glare - interior rearview mirror	■	■	■	■
<b>Air conditioning system</b>				
Electric air conditioner	■	■	■	■
Air filter (PM2.5)	■	■	■	■
Rapid ventilation function	■	■	■	■
<b>Operating equipment</b>				
ETC	□	□	□	□
Taxi meter interface	Electronic signals/mechanical signals	Electronic signals/mechanical signals	-	-
Taxi roof billboard reserved interface	■	■	-	-
In-vehicle monitoring and facial recognition	-	-	-	■
One-key alarm switch for the whole vehicle	-	-	-	■
Reserved installation location and interface wiring harness of the central control large screen	T3 version ■	—	-	-
Reserved installation location and interface wiring harness of the T3 customized host	T3 version ■	-	-	-
Reserved face recognition camera installation structure	T3 version ■	T3 version ■	T3 version ■	-

Electric drive category	Autonomous electric drive					Huawei electric drive			
	BYD battery	CATL400 battery	CATL400 NEW BMS battery	CATL replaceable battery	Aulton replaceable battery	BYD battery	CATL400 battery	CATL400 NEWBMS battery	CATL replaceable battery
Battery category	Lithium iron phosphate battery	Lithium iron phosphate battery	Lithium iron phosphate battery	Ternary lithium battery	Ternary lithium battery	Lithium iron phosphate battery	Lithium iron phosphate battery	Lithium iron phosphate battery	Ternary lithium battery
Battery capacity (kWh)	55	54.4	54.4	53	56	55	54.4	54.4	53
Motor type	Permanent Magnet / Synchronous								
Maximum power (kw)	100					120			
Maximum torque (N*m)	260					155			
Range (km, under working condition)	419	410	425	401	414	419	425	425	401
Power consumption per 100 km (kWh / 100 km, under working condition)	13.2	13.2	12.8	12.7	13.6	13.2	12.8	12.8	12.7
Charging mode	Quick charging	Quick charging	Quick charging	Quick replacement/quick charging	Quick replacement/quick charging	Slow charging/quick charging	Slow charging/quick charging	Slow charging/quick charging	Quick replacement/quick charging
Fast charging time (h)	0.5								
Slow charging time (h)	8								
Gearbox type	Electric vehicle single speed gearbox								
Warranty of motor, power battery and electronic control system	Eight years or 600,000 kilometers								

# SIGHTING



3D LED headlights and taillights, with a striking lighting effect when turned on

Dual 12.3-inch screens

## BESTUNE T55

Vehicle parameters	2022 1.5T AT Leap	2022 1.5T AT Transcendence	2022 1.5T AT Prance	2022 1.5T AT Excellence
Length*Width*Height(mm)	4475X1850X1625		4475X1850X1625	
Wheelbase (mm)	2650		2650	
Emission standards	China VI		China VI	
Oil tank capacity(L)	50		50	
Curb weight(Kg)	1485		1485	
Power				
Engine type	Gasoline		Gasoline	
Engine mode	Turbocharging In-cylinder direct injection		Turbocharging In-cylinder direct injection	
Displacement (L)	1.498		1.498	
Max. power (KW/rpm)	124/5500		124/5500	
Max. torque (N·m/rpm)	258/1500-4350		258/1500-4350	
Transmission type	DCT		DCT	
Max speed(km/h)	190		190	
Fuel consumption per 100 kilometers (L/100km)	6.6		6.6	
Chassis				
Drive Mode	Front drive		Front drive	
Suspension system	Front: McPherson type independent suspension - Rear Torsion beam semi-independent suspension		Front: McPherson type independent suspension - Rear Torsion beam semi-independent suspension	
Steering system type	EPS		EPS	
Braking system	Front: Vented Disc rear: Solid Disc		Front: Vented Disc rear: Solid Disc	
Tire specification	225/55 R18		245/45 R19	
T type spare tire	•	•	•	•
Engine bottom protector	•	•	•	•
Exterior				
Power sunroof	•	•	•	•
Panoramic sunroof	•	•	•	•
Automatically close of sunroof in the rain	•	•	•	•
LED Headlight	•	•	•	•
LED DRL	•	•	•	•
Manual headlight light adjustment	•	•	•	•
Headlights are automatically photosensitive on and off	•	•	•	•
LED taillight	•	•	•	•
LED tail lamp turning water effect	•	•	•	•
Headlight light height adjustable	•	•	•	•
Headlamp delayed off function	•	•	•	•
High position Stop Lamp	•	•	•	•
Outer Rear View Mirror Power Switch	•	•	•	•
Outer Rear View Mirror Power Folding	•	•	•	•
Auto folding of exterior rearview mirror upon car locking	•	•	•	•
Outside Mirror Power Heating	•	•	•	•
Exterior rearview mirror with turn signal	•	•	•	•
Boneless front window wiper	•	•	•	•
Front window automatic induction wiper	•	•	•	•
Rear windshield heating and defrosting	•	•	•	•
Welcome light	•	•	•	•
Luggage rack	•	•	•	•
Aluminum alloy hub	•	•	•	•
Green glass	•	•	•	•
Sport tilt	•	•	•	•
Interior				
7" Color LED instrument pane	•	•	•	•
12.3-inch optical central display screen	•	•	•	•
Up and down adjustment of steering wheel	•	•	•	•
Multi-function steering wheel	•	•	•	•
Leather steering wheel	•	•	•	•
Middle trim panel of door guard - Leather	•	•	•	•
Front reading lamp	•	•	•	•
Interior ambient lamp (foot)	•	•	•	•
Manual anti-glare interior rearview mirror	•	•	•	•
Automatic anti-glare interior rearview mirror	•	•	•	•
Four doors one-button regulation + anti-pinch power window	•	•	•	•
Sunvisor with mirror	•	•	•	•
Seat				
Textile Seat	•	•	•	•
Leather seats	•	•	•	•
Driver's electric seat	•	•	•	•
Driver Seat 6-Direction Adjustment	•	•	•	•
Driver's seat with lumbar support	•	•	•	•
Front Passenger Seat 4-Direction Adjustment	•	•	•	•
Front seat heating	•	•	•	•
Front center armrest	•	•	•	•
Rear center armrest	•	•	•	•
Rear center headrest	•	•	•	•
Rear seat 4/6 ratio down	•	•	•	•
Safety				
Front airbag(Driver's Seat & Front passenger's Seat)	•	•	•	•
Front side airbag(Driver's Seat & Front passenger's Seat)	•	•	•	•
Anti-lock brake system (ABS)	•	•	•	•
Electronic braking force distribution system (EBD)	•	•	•	•
Emergency Brake Assist (EBA)	•	•	•	•
Traction control system (TCS)	•	•	•	•
Electronic Stability Program (ESP)	•	•	•	•
Hill-start Assist Control(HAC)	•	•	•	•
Hill Descent Control(HDC)	•	•	•	•
Emergency brake warning system	•	•	•	•
Tire pressure monitoring	•	•	•	•
Rear reversing radar	•	•	•	•
Reverse image	•	•	•	•
Rear child protection lock	•	•	•	•
Driver's Seat belt reminder	•	•	•	•
Front passenger's Seat belt reminder	•	•	•	•
Child seat interface	•	•	•	•
Engine anti-theft	•	•	•	•
Intrusion alarm	•	•	•	•
Driving automatic door lock device	•	•	•	•
Door open warning function	•	•	•	•
Automatic window regulation after lock	•	•	•	•
Technology				
Autobility lever	•	•	•	•
Electronic shifting	•	•	•	•
Idling Start-Stop	•	•	•	•
Cruise control	•	•	•	•
Adaptable cruise	•	•	•	•
Front collision warning system	•	•	•	•
Automatic emergency brake(AEB)	•	•	•	•
AUTO HOLD	•	•	•	•
Electrical Park Brake(EPB)	•	•	•	•
Comfort				
Smart remote key	•	•	•	•
Keyless star	•	•	•	•
Keyless access	•	•	•	•
Electric A/C	•	•	•	•
Automatic A/C	•	•	•	•
Outside temperature display	•	•	•	•
Rear face blowing air outlet	•	•	•	•
Air Particulate Filter(PM2.5)	•	•	•	•
Sugar filter element	•	•	•	•
Blue tooth in-car Phone	•	•	•	•
12V power socket	•	•	•	•
USB front connector	•	•	•	•
USB front and rear interface	•	•	•	•
4-horn speaker system	•	•	•	•
6-horn speaker system	•	•	•	•
ETC interface reservation	•	•	•	•
Interface reservation of tachograph	•	•	•	•
Wireless charging	•	•	•	•
Optional package				
Color (door guard/middle trim panel/seat suede fabric and embroidery-rear door body split color)	•	•	•	•
360° panoramic image (not provided with reversing image)	•	•	•	•
Body color	Monochrome	Monochrome	Monochrome	Monochrome

Remarks: \* Standard configuration; "•" No such equipment; "◊" Optional  
The pictures, text and technical parameters are only for reference and do not form part of the contract. Please consult the local dealer of FAW Bestune for details.

### Colors



### Dimension



### Wheel hubs



## BESTUNE T55



Flowing-style turn signal tail lights



Attractive curves in the Philosophy of Light and Shadow 3.0



### BESTUNE B70 | PRODUCT EQUIPMENT DESCRIPTION

Vehicle name	1.5T		1.5T D		1.5T D Pro		1.5T D Pro		1.5T D Pro																																													
	1.5T	1.5T D	1.5T D Pro	1.5T D Pro	1.5T D Pro	1.5T D Pro	1.5T D Pro	1.5T D Pro	1.5T D Pro																																													
<b>Basic Info</b>	<table border="1"> <tr> <td>Model No.</td> <td>BYD16020</td> <td>BYD16020</td> <td>BYD16020</td> <td>BYD16020</td> <td>BYD16020</td> <td>BYD16020</td> <td>BYD16020</td> <td>BYD16020</td> <td>BYD16020</td> <td>BYD16020</td> </tr> <tr> <td>Model Name</td> <td>Bestune B70</td> <td>Bestune B70</td> <td>Bestune B70</td> <td>Bestune B70</td> <td>Bestune B70</td> <td>Bestune B70</td> <td>Bestune B70</td> <td>Bestune B70</td> <td>Bestune B70</td> <td>Bestune B70</td> </tr> <tr> <td>Model Code</td> <td>BYD16020</td> <td>BYD16020</td> <td>BYD16020</td> <td>BYD16020</td> <td>BYD16020</td> <td>BYD16020</td> <td>BYD16020</td> <td>BYD16020</td> <td>BYD16020</td> <td>BYD16020</td> </tr> <tr> <td>Model Year</td> <td>2024</td> <td>2024</td> <td>2024</td> <td>2024</td> <td>2024</td> <td>2024</td> <td>2024</td> <td>2024</td> <td>2024</td> <td>2024</td> </tr> </table>										Model No.	BYD16020	BYD16020	BYD16020	BYD16020	BYD16020	BYD16020	BYD16020	BYD16020	BYD16020	BYD16020	Model Name	Bestune B70	Bestune B70	Bestune B70	Bestune B70	Bestune B70	Bestune B70	Bestune B70	Bestune B70	Bestune B70	Bestune B70	Model Code	BYD16020	BYD16020	BYD16020	BYD16020	BYD16020	BYD16020	BYD16020	BYD16020	BYD16020	BYD16020	Model Year	2024	2024	2024	2024	2024	2024	2024	2024	2024	2024
Model No.	BYD16020	BYD16020	BYD16020	BYD16020	BYD16020	BYD16020	BYD16020	BYD16020	BYD16020	BYD16020																																												
Model Name	Bestune B70	Bestune B70	Bestune B70	Bestune B70	Bestune B70	Bestune B70	Bestune B70	Bestune B70	Bestune B70	Bestune B70																																												
Model Code	BYD16020	BYD16020	BYD16020	BYD16020	BYD16020	BYD16020	BYD16020	BYD16020	BYD16020	BYD16020																																												
Model Year	2024	2024	2024	2024	2024	2024	2024	2024	2024	2024																																												
<b>Engine Info</b>	<table border="1"> <tr> <td>Engine Type</td> <td>Gasoline</td> <td>Gasoline</td> <td>Gasoline</td> <td>Gasoline</td> <td>Gasoline</td> <td>Gasoline</td> <td>Gasoline</td> <td>Gasoline</td> <td>Gasoline</td> <td>Gasoline</td> </tr> <tr> <td>Engine Displacement (L)</td> <td>1.5</td> <td>1.5</td> <td>1.5</td> <td>1.5</td> <td>1.5</td> <td>1.5</td> <td>1.5</td> <td>1.5</td> <td>1.5</td> <td>1.5</td> </tr> <tr> <td>Max Power (kW)</td> <td>105</td> <td>105</td> <td>105</td> <td>105</td> <td>105</td> <td>105</td> <td>105</td> <td>105</td> <td>105</td> <td>105</td> </tr> <tr> <td>Max Torque (Nm)</td> <td>155</td> <td>155</td> <td>155</td> <td>155</td> <td>155</td> <td>155</td> <td>155</td> <td>155</td> <td>155</td> <td>155</td> </tr> </table>										Engine Type	Gasoline	Gasoline	Gasoline	Gasoline	Gasoline	Gasoline	Gasoline	Gasoline	Gasoline	Gasoline	Engine Displacement (L)	1.5	1.5	1.5	1.5	1.5	1.5	1.5	1.5	1.5	1.5	Max Power (kW)	105	105	105	105	105	105	105	105	105	105	Max Torque (Nm)	155	155	155	155	155	155	155	155	155	155
Engine Type	Gasoline	Gasoline	Gasoline	Gasoline	Gasoline	Gasoline	Gasoline	Gasoline	Gasoline	Gasoline																																												
Engine Displacement (L)	1.5	1.5	1.5	1.5	1.5	1.5	1.5	1.5	1.5	1.5																																												
Max Power (kW)	105	105	105	105	105	105	105	105	105	105																																												
Max Torque (Nm)	155	155	155	155	155	155	155	155	155	155																																												
<b>Transmission</b>	<table border="1"> <tr> <td>Transmission Type</td> <td>Manual</td> <td>Manual</td> <td>Manual</td> <td>Manual</td> <td>Manual</td> <td>Manual</td> <td>Manual</td> <td>Manual</td> <td>Manual</td> <td>Manual</td> </tr> <tr> <td>Transmission Gear</td> <td>5</td> <td>5</td> <td>5</td> <td>5</td> <td>5</td> <td>5</td> <td>5</td> <td>5</td> <td>5</td> <td>5</td> </tr> </table>										Transmission Type	Manual	Manual	Manual	Manual	Manual	Manual	Manual	Manual	Manual	Manual	Transmission Gear	5	5	5	5	5	5	5	5	5	5																						
Transmission Type	Manual	Manual	Manual	Manual	Manual	Manual	Manual	Manual	Manual	Manual																																												
Transmission Gear	5	5	5	5	5	5	5	5	5	5																																												
<b>Chassis</b>	<table border="1"> <tr> <td>Chassis Type</td> <td>Front-wheel drive</td> <td>Front-wheel drive</td> <td>Front-wheel drive</td> <td>Front-wheel drive</td> <td>Front-wheel drive</td> <td>Front-wheel drive</td> <td>Front-wheel drive</td> <td>Front-wheel drive</td> <td>Front-wheel drive</td> <td>Front-wheel drive</td> </tr> <tr> <td>Front Suspension</td> <td>McPherson</td> <td>McPherson</td> <td>McPherson</td> <td>McPherson</td> <td>McPherson</td> <td>McPherson</td> <td>McPherson</td> <td>McPherson</td> <td>McPherson</td> <td>McPherson</td> </tr> <tr> <td>Rear Suspension</td> <td>Multi-link</td> <td>Multi-link</td> <td>Multi-link</td> <td>Multi-link</td> <td>Multi-link</td> <td>Multi-link</td> <td>Multi-link</td> <td>Multi-link</td> <td>Multi-link</td> <td>Multi-link</td> </tr> </table>										Chassis Type	Front-wheel drive	Front-wheel drive	Front-wheel drive	Front-wheel drive	Front-wheel drive	Front-wheel drive	Front-wheel drive	Front-wheel drive	Front-wheel drive	Front-wheel drive	Front Suspension	McPherson	McPherson	McPherson	McPherson	McPherson	McPherson	McPherson	McPherson	McPherson	McPherson	Rear Suspension	Multi-link	Multi-link	Multi-link	Multi-link	Multi-link	Multi-link	Multi-link	Multi-link	Multi-link	Multi-link											
Chassis Type	Front-wheel drive	Front-wheel drive	Front-wheel drive	Front-wheel drive	Front-wheel drive	Front-wheel drive	Front-wheel drive	Front-wheel drive	Front-wheel drive	Front-wheel drive																																												
Front Suspension	McPherson	McPherson	McPherson	McPherson	McPherson	McPherson	McPherson	McPherson	McPherson	McPherson																																												
Rear Suspension	Multi-link	Multi-link	Multi-link	Multi-link	Multi-link	Multi-link	Multi-link	Multi-link	Multi-link	Multi-link																																												
<b>Dimensions</b>	<table border="1"> <tr> <td>Length (mm)</td> <td>4700</td> <td>4700</td> <td>4700</td> <td>4700</td> <td>4700</td> <td>4700</td> <td>4700</td> <td>4700</td> <td>4700</td> <td>4700</td> </tr> <tr> <td>Width (mm)</td> <td>1820</td> <td>1820</td> <td>1820</td> <td>1820</td> <td>1820</td> <td>1820</td> <td>1820</td> <td>1820</td> <td>1820</td> <td>1820</td> </tr> <tr> <td>Height (mm)</td> <td>1480</td> <td>1480</td> <td>1480</td> <td>1480</td> <td>1480</td> <td>1480</td> <td>1480</td> <td>1480</td> <td>1480</td> <td>1480</td> </tr> <tr> <td>Wheelbase (mm)</td> <td>2700</td> <td>2700</td> <td>2700</td> <td>2700</td> <td>2700</td> <td>2700</td> <td>2700</td> <td>2700</td> <td>2700</td> <td>2700</td> </tr> </table>										Length (mm)	4700	4700	4700	4700	4700	4700	4700	4700	4700	4700	Width (mm)	1820	1820	1820	1820	1820	1820	1820	1820	1820	1820	Height (mm)	1480	1480	1480	1480	1480	1480	1480	1480	1480	1480	Wheelbase (mm)	2700	2700	2700	2700	2700	2700	2700	2700	2700	2700
Length (mm)	4700	4700	4700	4700	4700	4700	4700	4700	4700	4700																																												
Width (mm)	1820	1820	1820	1820	1820	1820	1820	1820	1820	1820																																												
Height (mm)	1480	1480	1480	1480	1480	1480	1480	1480	1480	1480																																												
Wheelbase (mm)	2700	2700	2700	2700	2700	2700	2700	2700	2700	2700																																												
<b>Exterior</b>	<table border="1"> <tr> <td>Exterior Color</td> <td>Quantum Red</td> <td>Quantum Red</td> <td>Quantum Red</td> <td>Quantum Red</td> <td>Quantum Red</td> <td>Quantum Red</td> <td>Quantum Red</td> <td>Quantum Red</td> <td>Quantum Red</td> <td>Quantum Red</td> </tr> <tr> <td>Exterior Features</td> <td>LED Headlights</td> <td>LED Headlights</td> <td>LED Headlights</td> <td>LED Headlights</td> <td>LED Headlights</td> <td>LED Headlights</td> <td>LED Headlights</td> <td>LED Headlights</td> <td>LED Headlights</td> <td>LED Headlights</td> </tr> </table>										Exterior Color	Quantum Red	Quantum Red	Quantum Red	Quantum Red	Quantum Red	Quantum Red	Quantum Red	Quantum Red	Quantum Red	Quantum Red	Exterior Features	LED Headlights	LED Headlights	LED Headlights	LED Headlights	LED Headlights	LED Headlights	LED Headlights	LED Headlights	LED Headlights	LED Headlights																						
Exterior Color	Quantum Red	Quantum Red	Quantum Red	Quantum Red	Quantum Red	Quantum Red	Quantum Red	Quantum Red	Quantum Red	Quantum Red																																												
Exterior Features	LED Headlights	LED Headlights	LED Headlights	LED Headlights	LED Headlights	LED Headlights	LED Headlights	LED Headlights	LED Headlights	LED Headlights																																												
<b>Interior</b>	<table border="1"> <tr> <td>Interior Features</td> <td>8 Speakers</td> <td>8 Speakers</td> <td>8 Speakers</td> <td>8 Speakers</td> <td>8 Speakers</td> <td>8 Speakers</td> <td>8 Speakers</td> <td>8 Speakers</td> <td>8 Speakers</td> <td>8 Speakers</td> </tr> <tr> <td>Interior Color</td> <td>Black</td> <td>Black</td> <td>Black</td> <td>Black</td> <td>Black</td> <td>Black</td> <td>Black</td> <td>Black</td> <td>Black</td> <td>Black</td> </tr> </table>										Interior Features	8 Speakers	8 Speakers	8 Speakers	8 Speakers	8 Speakers	8 Speakers	8 Speakers	8 Speakers	8 Speakers	8 Speakers	Interior Color	Black	Black	Black	Black	Black	Black	Black	Black	Black	Black																						
Interior Features	8 Speakers	8 Speakers	8 Speakers	8 Speakers	8 Speakers	8 Speakers	8 Speakers	8 Speakers	8 Speakers	8 Speakers																																												
Interior Color	Black	Black	Black	Black	Black	Black	Black	Black	Black	Black																																												
<b>Warranty</b>	<table border="1"> <tr> <td>Warranty Type</td> <td>3 Year / 100,000 km</td> <td>3 Year / 100,000 km</td> <td>3 Year / 100,000 km</td> <td>3 Year / 100,000 km</td> <td>3 Year / 100,000 km</td> <td>3 Year / 100,000 km</td> <td>3 Year / 100,000 km</td> <td>3 Year / 100,000 km</td> <td>3 Year / 100,000 km</td> <td>3 Year / 100,000 km</td> </tr> </table>										Warranty Type	3 Year / 100,000 km	3 Year / 100,000 km	3 Year / 100,000 km	3 Year / 100,000 km	3 Year / 100,000 km	3 Year / 100,000 km	3 Year / 100,000 km	3 Year / 100,000 km	3 Year / 100,000 km	3 Year / 100,000 km																																	
Warranty Type	3 Year / 100,000 km	3 Year / 100,000 km	3 Year / 100,000 km	3 Year / 100,000 km	3 Year / 100,000 km	3 Year / 100,000 km	3 Year / 100,000 km	3 Year / 100,000 km	3 Year / 100,000 km	3 Year / 100,000 km																																												

**Wheel Hub**



18" Dynamic Wheel Hub



19" Dynamic Wheel Hub

**Body Size**





Remarks: ● Standard configuration, ○ No such equipment, ◎ Optional. Images, size, and technical parameters are for reference only and do not form part of the contract. Please consult your local BESTUNE dealer for details.







**BESTUNE T55**

	PRELAP	ALL-STAR	PRELAP	ALL-STAR		PRELAP	ALL-STAR	PRELAP	ALL-STAR
<b>Platform</b>	2021/05/15	2021/05/15	2021/05/15	2021/05/15	<b>Body</b>	2021/05/15	2021/05/15	2021/05/15	2021/05/15
Chassis (Front suspension)	2021/05/15	2021/05/15	2021/05/15	2021/05/15	Chassis (Rear suspension)	2021/05/15	2021/05/15	2021/05/15	2021/05/15
Chassis (Rear suspension)	2021/05/15	2021/05/15	2021/05/15	2021/05/15	Body (Body)	2021/05/15	2021/05/15	2021/05/15	2021/05/15
Chassis (Front axle)	2021/05/15	2021/05/15	2021/05/15	2021/05/15	Chassis (Rear axle)	2021/05/15	2021/05/15	2021/05/15	2021/05/15
Chassis (Rear axle)	2021/05/15	2021/05/15	2021/05/15	2021/05/15	Body (Chassis)	2021/05/15	2021/05/15	2021/05/15	2021/05/15
Chassis (Front suspension)	2021/05/15	2021/05/15	2021/05/15	2021/05/15	Chassis (Rear suspension)	2021/05/15	2021/05/15	2021/05/15	2021/05/15
Chassis (Rear suspension)	2021/05/15	2021/05/15	2021/05/15	2021/05/15	Body (Front suspension)	2021/05/15	2021/05/15	2021/05/15	2021/05/15
Chassis (Front axle)	2021/05/15	2021/05/15	2021/05/15	2021/05/15	Chassis (Rear axle)	2021/05/15	2021/05/15	2021/05/15	2021/05/15
Chassis (Rear axle)	2021/05/15	2021/05/15	2021/05/15	2021/05/15	Body (Chassis)	2021/05/15	2021/05/15	2021/05/15	2021/05/15
Chassis (Front suspension)	2021/05/15	2021/05/15	2021/05/15	2021/05/15	Chassis (Rear suspension)	2021/05/15	2021/05/15	2021/05/15	2021/05/15
Chassis (Rear suspension)	2021/05/15	2021/05/15	2021/05/15	2021/05/15	Body (Front suspension)	2021/05/15	2021/05/15	2021/05/15	2021/05/15
Chassis (Front axle)	2021/05/15	2021/05/15	2021/05/15	2021/05/15	Chassis (Rear axle)	2021/05/15	2021/05/15	2021/05/15	2021/05/15
Chassis (Rear axle)	2021/05/15	2021/05/15	2021/05/15	2021/05/15	Body (Chassis)	2021/05/15	2021/05/15	2021/05/15	2021/05/15
Chassis (Front suspension)	2021/05/15	2021/05/15	2021/05/15	2021/05/15	Chassis (Rear suspension)	2021/05/15	2021/05/15	2021/05/15	2021/05/15
Chassis (Rear suspension)	2021/05/15	2021/05/15	2021/05/15	2021/05/15	Body (Front suspension)	2021/05/15	2021/05/15	2021/05/15	2021/05/15
Chassis (Front axle)	2021/05/15	2021/05/15	2021/05/15	2021/05/15	Chassis (Rear axle)	2021/05/15	2021/05/15	2021/05/15	2021/05/15
Chassis (Rear axle)	2021/05/15	2021/05/15	2021/05/15	2021/05/15	Body (Chassis)	2021/05/15	2021/05/15	2021/05/15	2021/05/15

